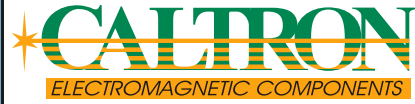


# Hochstrom Filter / High Current Filter 480V 50A 3-Ph.



Member of:  
**ELMACO**  
GROUP



Hochstrom Filter für Industrie Anwendungen der Schutzklasse I, EN 133200, UL 1283 und IEC 60950 konform.  
Speziell für Frequenzumformer, Motor-Antriebe, USV-Anlagen, Stromrichter u.s.w.  
Dieses Produkt setzt neue Massstäbe in der Funkentstörung bei grösseren Anlagen für Standard-Anwendungen bis 480VAC.

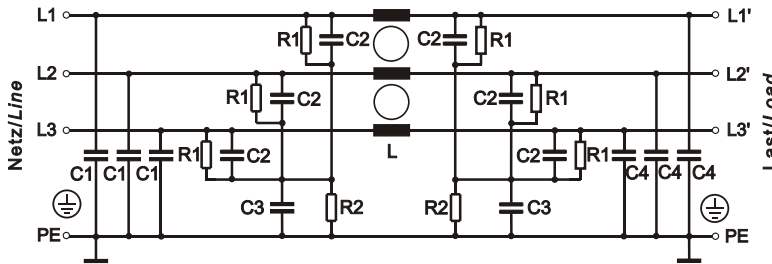
High current filters for industry applications to protection-class I, conform to EN 133200, UL 1283 and IEC 60950. Specifically for frequency-converters, motor-drives, UPS-Systems, inverters and so on. This product sets major new performance standards, through its universal 480V rating.

Bemessungsspannung $U_R$ ( $U_{max}$ )	Rated voltage $U_R$ ( $U_{max}$ )	480 [V] 50/60 [Hz]
Nennstrom	Rated current	max. 3 x 50 [A] / $u$ 40 [°C]
Ableitstrom <sup>(1)</sup>	Leakage current <sup>(1)</sup>	< 5 [mA] @ 440 [VAC] 50 [Hz]
Klimakategorie	Application class	25/100/21 nach IEC 60068-1
Prüfspannungen <sup>(2)</sup>	Test voltages <sup>(2)</sup>	L → PE 2700 [VDC] 2 [s] L → L 2250 [VDC] 2 [s]



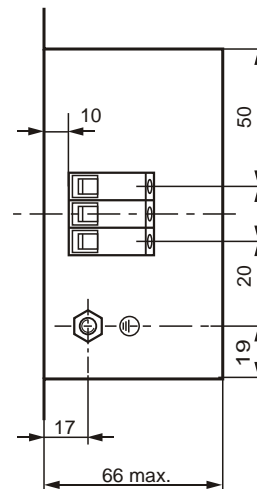
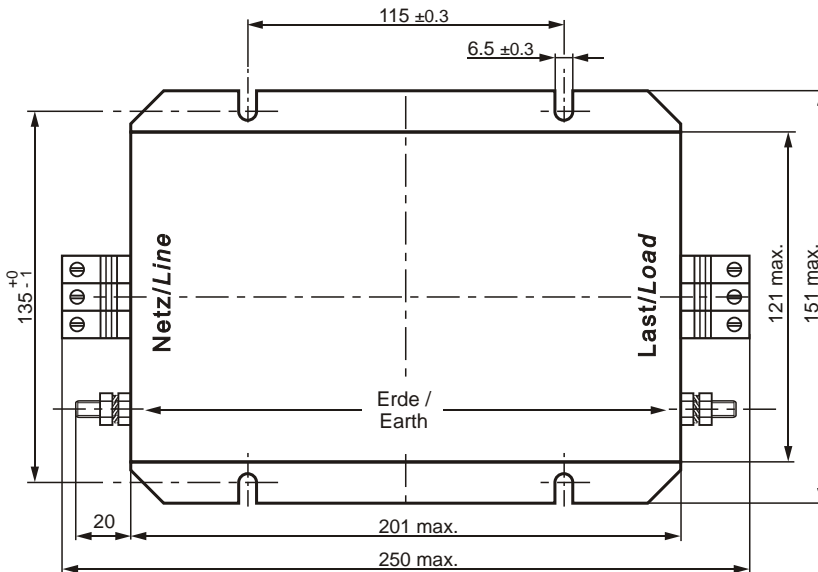
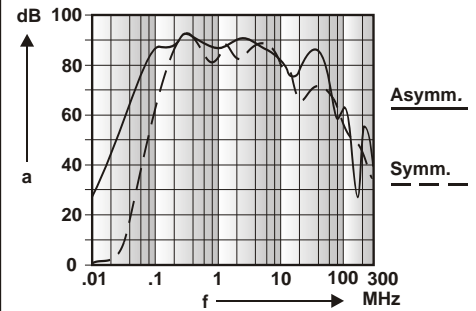
(1) Gemessen nach IEC 60950 / Measured according to IEC 60950  
(2) Ohne Widerstände / Without resistors

Konform:   IEC 60950  
Conception conforms to: EN 133200 (EN 60939) UL 1283 (EN 60939) CSA C22.2 No. 8-M 1986



- L = 3x1 mH
- C1 = 10 nF
- C2 = 4.4 µF
- C3 = 1 µF
- C4 = 100 nF
- R1 = 1 M
- R2 = 2.2 M

Einfügungsdämpfung (Richtwerte)/  
Insertion loss (approx. values)



**Anschlüsse**  
Phasen: Phoenix Klemmen 10 mm<sup>2</sup>  
Erde: Bolzen M6

**Terminals**  
Phases: Phoenix screw terminals 10 mm<sup>2</sup>  
Earth: Nut bolt M6

Datum / Date:	20.06.2002	MZ
Index :	A	20.06.2002

Best. Nr. / Order Nr.:  
**FP-8350-111A**