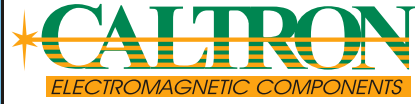


Hochstrom Filter / High Current Filter 480V 110A 3-Ph.



Member of:
ELMACO
GROUP



Hochstrom Filter für Industrie Anwendungen der Schutzklasse I, EN 133200, UL 1283 und IEC 60950 konform.
Speziell für Frequenzumformer, Motor-Antriebe, USV-Anlagen, Stromrichter u.s.w.
Dieses Produkt setzt neue Maßstäbe in der Funkentstörung bei grösseren Anlagen für Standard-Anwendungen bis 480VAC.

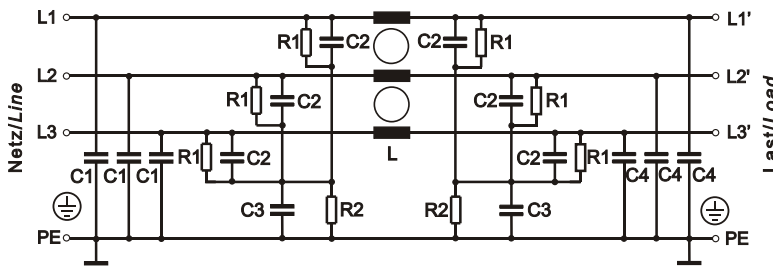
High current filters for industry applications to protection-class I, conform to EN 133200, UL 1283 and IEC 60950. Specifically for frequency-converters, motor-drives, UPS-Systems, inverters and so on. This product sets major new performance standards, through its universal 480V rating.

Bemessungsspannung U_R (U_{max})	Rated voltage U_R (U_{max})	480 [V] 50/60 [Hz]
Nennstrom	Rated current	max. 3 x 110 [A] / u 40 [°C]
Ableitstrom (1)	Leakage current (1)	< 5 [mA] @ 440 [VAC] 50 [Hz]
Klimakategorie	Application class	25/100/21 nach IEC 60068-1
Prüfspannungen (2)	Test voltages (2)	L → PE 2700 [VDC] 2 [s] L → L 2250 [VDC] 2 [s]



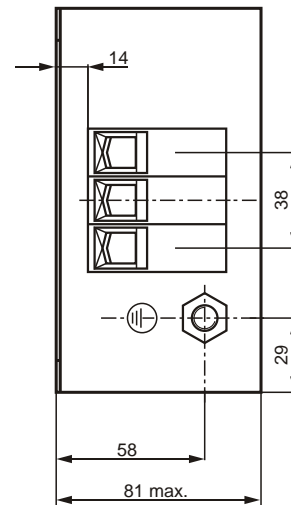
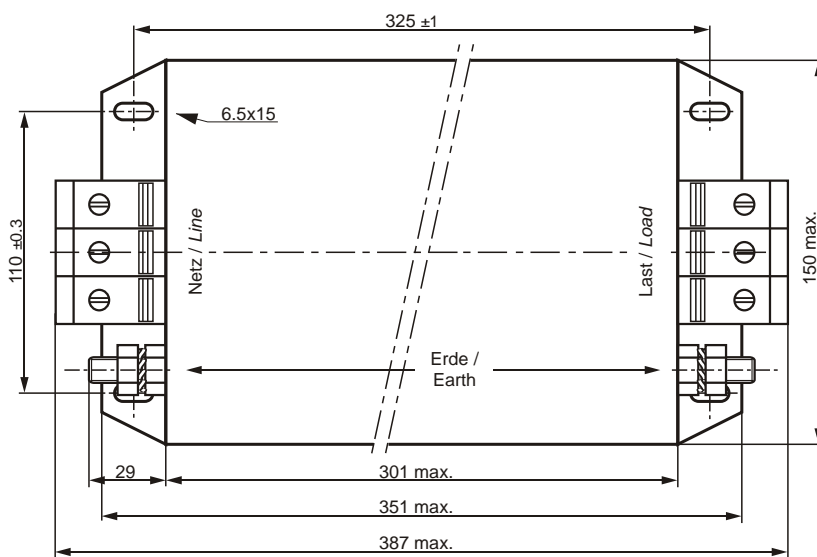
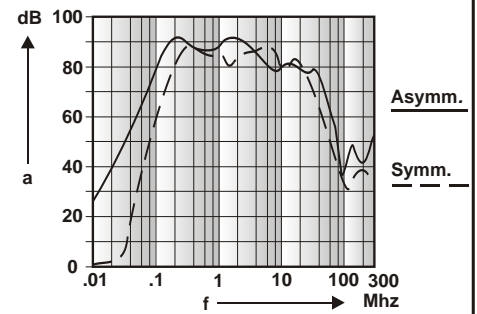
(1) Gemessen nach IEC 60950 / Measured according to IEC 60950
(2) Ohne Widerstände / Without resistors

Konform:   IEC 60950
Conception conforms to: EN 133200 UL 1283
(EN 60939) CSA C22.2 No. 8-M 1986



L = 3x0.7 mH
C1 = 47 nF
C2 = 6.6 µF
C3 = 1 µF
C4 = 100 nF
R1 = 1 M
R2 = 2.2 M

Einfügungsdämpfung (Richtwerte)/
Insertion loss (approx. values)



Anschlüsse
Phasen: Phoenix Klemmen 50 mm²
Erde: Bolzen M10

Terminals
Phases: Phoenix screw terminals 50 mm²
Earth: Nut bolt M10

Datum / Date:	20.06.2002	MZ
Index :	A	20.06.2002

Best. Nr. / Order Nr.:
FP-88H1-111A